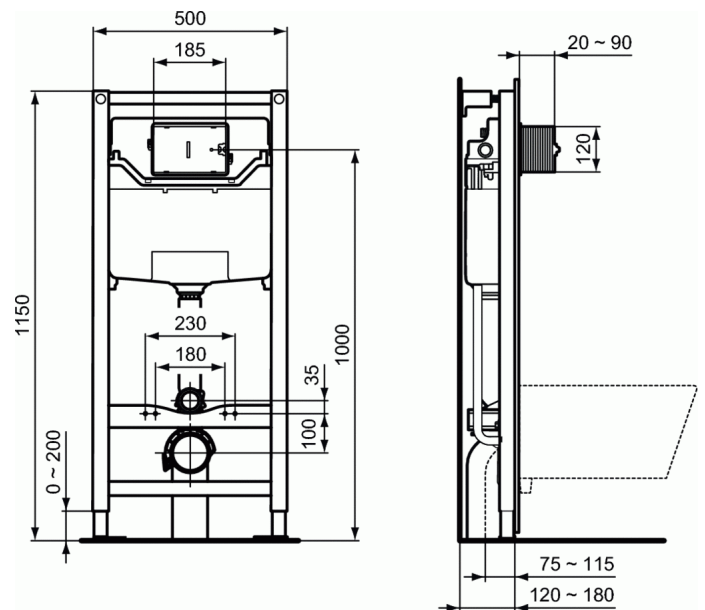


PROSYS 120M frame



120M frame

Suitable to be used with wall mounted WC bowls

- For installation in front of solid wall or between two light plasterboard walls according to manual
- Frame tested for a load of 400 kg
- Frame corrosion resistant & resistant to scratches
- Easy and quick installation with EasyFix system
- Directional outlet elbow, adjustable in depth
- Height adjustable from 0 to 200mm, quick adjustable height legs with brakes allowing one person installation
- 120 mm minimum thick
- Built-in tank with front mechanical actuation, possible pneumatic or electronic transforming by kits available as separate order
- Dual flush, pre-set for 6/3 L, simple adjustment to reduce full flush from 6 to 4.5 L
- Reservoir in polypropylene (PP) very resistant and unalterable to thermal stresses, supplied with anti-condensation lining
- SmartValve (saves up to 9 litres of water per day), CE marking EN 14055 CL1, silent valve according to the NF standard category Class I, tank 120 mm thickness, 2 water supply connections

Accessories Included:

- Toilet bowl fixing hardware
- Frame fastening materials
- Inlet and outlet WC bowl connection
- Outlet bend and Ø90/110 mm adaptor
- Bowl rubber seal Ø45 mm
- Protective box
- G ½" stop valve

For assembly with control plates (separate order):

FINISHES*



67

* 67 = Neutral

PROSYS 120M frame



Mechanical control plates: Oleas™ M1, M2, M3, M4; Solea™ M1, M2; Septa Pro™ M1,M2

OR

Mechanical control plates (in combination with SmartFlush kit R018667): Oleas™ SmartFlush M1, M2

SmartFlush kit (in combination with Mechanical control plates Oleas™ SmartFlush M1, M2) R018667

OR

Pneumatic control plates (in combination with Pneumatic conversation kit R009867): Oleas™ P1, P2,P3 Solea™ P1,P2;

Septa Pro™ P1, P2, P3, P4, Floor; Septa Pro™ XS P1,P2

Pneumatic conversation kit (in combination with pneumatic control plates) R009867

OR

Touchless control plates Symfo™, Altes™ (in combination with Mains Kit R015867 or SmartForce conversation kit R015767)

Kit for Touchless/Sensor control plates Mains - 100-240V AC / 6.75V DC R015867

SmartForce conversation kit - saves energy: SmartForce technology harnesses the power of water in motion to generate enough energy to power a no-touch control plate R015767

Electronic/IR control plates (in combination with Kit for Electronic/IR control plate conversion R009967): Septa Pro™ E1,E2

E1,E2

Kit for Electronic/IR control plate conversion R009967

Optionals:

- Corner installation kit (Enables the installation of WCs in bathroom corners), compatible with ProSys™ 120 and ProSys™ 80 frames and freestanding frames (R018567)

- Acoustic insulation for wall-hung pan and bidet (R017467)

- Noise insulation kit - frame to floor (avoids direct contact between the frame and the floor) (R010667)